

HELIAX® 3.0



HELIAX® SureFlex™ premium cable assemblies

Exceptional performance—guaranteed

- New HELIAX® SureGuard weatherproofing technology
- Guaranteed for low PIM, VSWR and DTF
- Protect your network investment

POWERED BY



Designed to address your network modernization challenges

The network modernization process is becoming increasingly complex. Today's 2G, 3G and 4G wireless networks are evolving from conventional sites to top-of-the-tower remote radio unit (RRU) sites. As technology advances—pumping more data through less spectrum—radio frequency (RF) performance standards are becoming more stringent. Your ability to remain agile within a volatile market remains vital to your success—but the lead time for site development is shrinking.

Wireless service providers must accommodate both conventional and fiber-to-the-antenna (FTTA) site architectures with multiple components. At the heart of it all—connecting all of the equipment you use—are your assemblies. Dozens of them. Each must deliver consistent and superior electrical performance. If even one assembly fails, the cost to troubleshoot and replace it can be steep.

From the base station to the tower top, HELIAX SureFlex™ premium cable assemblies help eliminate the weak links in your network.





NEW!

SureFlex features new series with patented HeliAX® SureGuard technology!

CommScope offers a factory-installed, molded-boot weatherproofing system designed to seal connector junctions between jumpers and antennas, RRUs and amplifiers.

- Reusable, easy-to-install solution in tight, congested areas
- Each compact boot securely protects RF connectors
- Prevents moisture corrosion in extreme environments

Visit our eCatalog for specific part numbers.

(This product is covered by U.S. Pat. No. 6,429,373 and pending applications.)

Tested and guaranteed

From base station to tower top, there should be no weak links in your network. That's why CommScope designed HeliAX SureFlex™ cable assemblies—a vital part of our premium Andrew® portfolio of wireless solutions.

SureFlex = premium RF performance

Using a patented process, SureFlex® cable and connectors are physically bonded to create an assembly that delivers outstanding RF results where they matter most: passive intermodulation (PIM), voltage standing wave ratio (VSWR), and distance-to-fault (DTF).

When compared to competitive field-fitted assemblies, HeliAX SureFlex provides better protection against environmental degradation.

CommScope tests each assembly for PIM, VSWR and DTF—sharing the results at <http://www.commscope.com/webtrak>. Once installed, the final assembly is backed by our iron-clad 10-year warranty and guaranteed to IP66 and IP68 standards for weather resistance.





A powerful solution—an exceptional process

Developed and patented by CommScope, the innovative, manufacturing process used to design SureFlex cable assemblies features premium Andrew components. Components are fused to create an integrated assembly with superior physical and electrical integrity.

HELIAX® cable and matching SureFlex connectors are specifically engineered to be used together, optimizing RF performance and extending long-term reliability.

- **Automated cable prep:** The process begins with the jacket being removed from the cable end. Specialized machinery cleans the cable surface and preps the cable for connector attachment.
- **Solder connection:** A 360-degree, lead-free solder joint is used to physically bind connectors to jumpers. Each connector and cable end is bonded on both the inner and outer contact surfaces using a continuous bead of solder. This helps ensure optimal RF performance by preventing water ingress and the loosening effects of tower vibrations.
- **Pin depth:** The depth of the center conductor is carefully monitored in real-time to ensure consistent VSWR performance.

HELIAX® cable and matching SureFlex connectors are specifically engineered to be used together, optimizing RF performance and extending long-term reliability.



CommScope certified report systems: Access factory performance testing on the go

WebTrak®

WebTrak provides 24/7 factory testing reports, including attenuation and cable construction for CommScope fiber, hybrid fiber and twisted-pair cables; cable assemblies and base station antennas. Start using it today: visit www.commscope/webtrak.



cTrak™

The mobile version of our WebTrak certified report system, cTrak is just one more way CommScope assures you of the quality and high network performance you expect from a SureFlex solution. *Download cTrak from iTunes® today!*

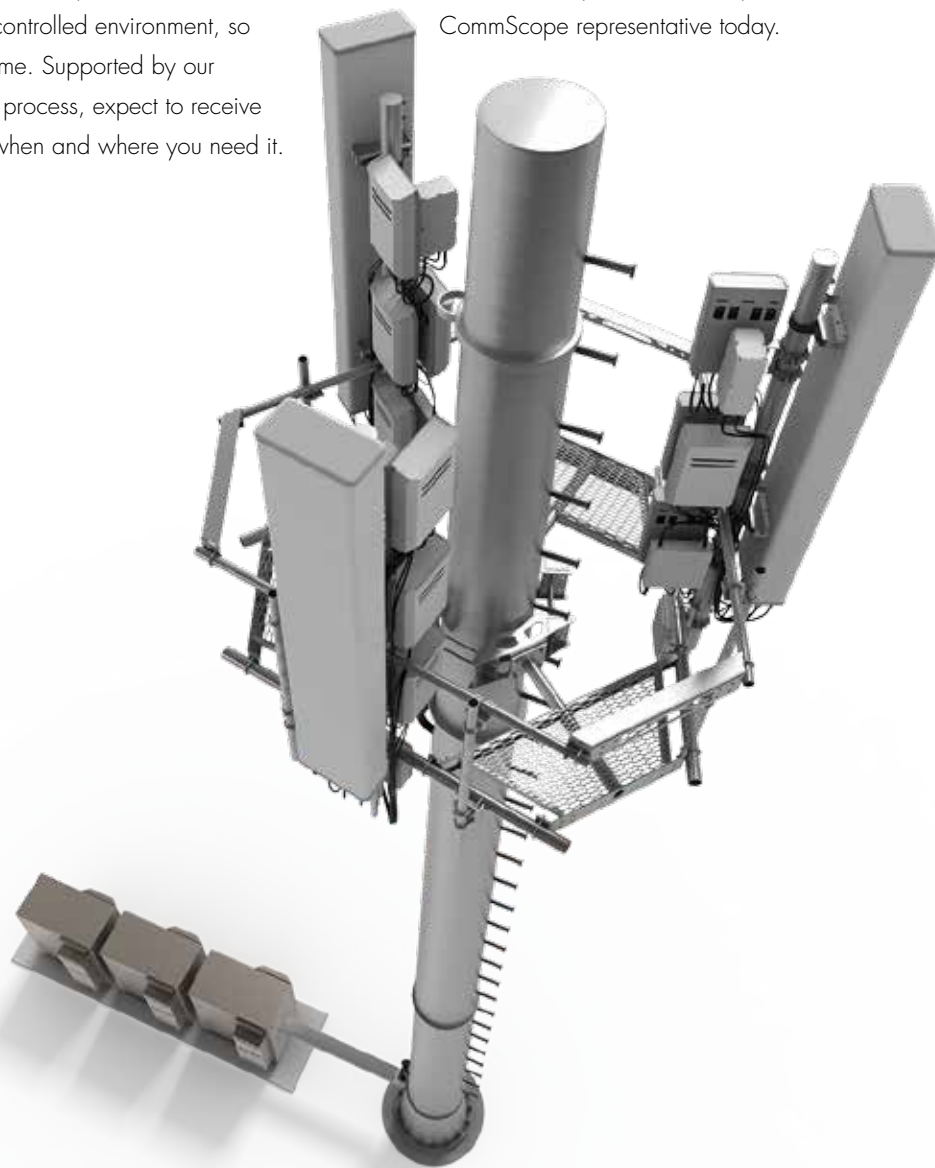
HELIAX SureFlex: Protect your network modernization investment

Simply put, the performance of SureFlex premium cable assemblies is guaranteed in writing. If you need to consistently meet system PIM performance levels, eliminate installation variables and provide long-term protection against moisture ingress and other environmental threats, SureFlex—with SureGuard weatherproofing technology—is the answer.

SureFlex cable assemblies are pre-manufactured and tested in a tightly controlled environment, so they arrive on-site, on-time. Supported by our streamlined distribution process, expect to receive your SureFlex solution when and where you need it.

Protect your network investment: enhance performance and save valuable time while minimizing the potential for connection errors. It all adds up to a level of reliability and savings demanded by today's challenging network modernization process.

Discover how HELIAX SureFlex premium cable assemblies can boost the performance of your network. Contact a local CommScope representative today.



Proud to be a part of your network's story

Here at CommScope, we embrace our role as a trusted resource, partner and facilitator. We create the infrastructure that connects the world and evolves with every advance in technology. By investing all of our capabilities, resources, relationships and products into your toughest challenges, we continue our long history of solving problems together—paving the way for new ideas and fresh ways of thinking.

We're a trusted resource and partner around the world because we're invested in you: your people, your networks, your success. It inspires us to build relationships and infrastructure ... connect people and technologies across protocols, oceans and time zones ... and share what we learn along the way. We'll never stop connecting and evolving networks for the business of life at home, at work and on the go.

**This is our promise to you.
This is CommScope.**

COMMSCOPE®

www.commscope.com

Visit our website or contact your local CommScope representative for more information.

© 2013 CommScope, Inc. All rights reserved.

All trademarks identified by ® or ™ are registered trademarks or trademarks, respectively, of CommScope, Inc.

This document is for planning purposes only and is not intended to modify or supplement any specifications or warranties relating to CommScope products or services.

BR-104351.4-EN (09/13)